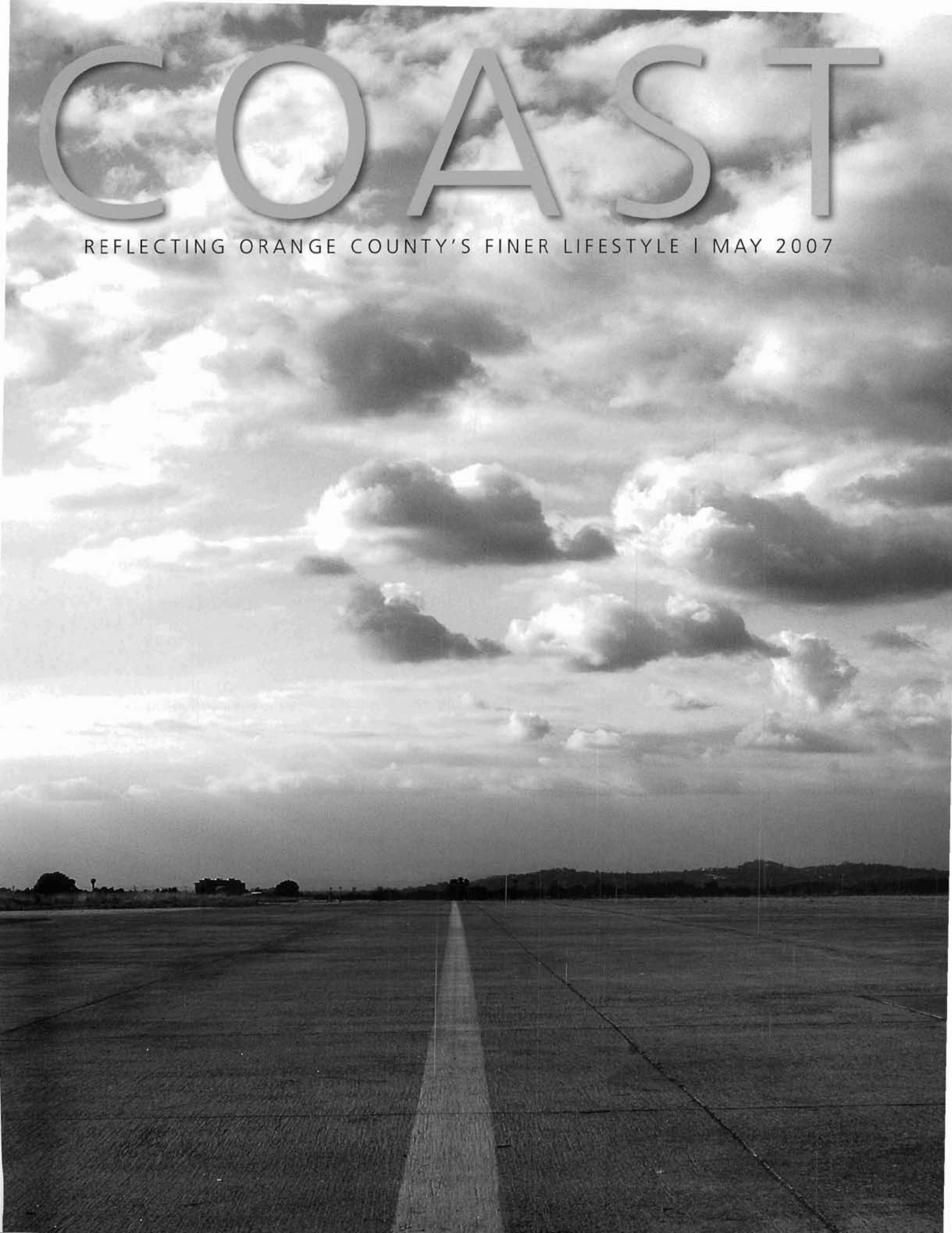


COAST

REFLECTING ORANGE COUNTY'S FINER LIFESTYLE | MAY 2007



SUSTAINING OUR FUTURE

For a park to be great, great things need to support it. There needs to be great vision. There needs to be a great design. There needs to be great funding from a great tax base. There needs to be a forward thinking community that sees the gift of such a great project for generations to come.

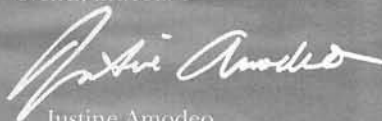
Since last fall, when the Orange County Great Park Board of Directors approved the Great Park Preliminary Master plan by Master Designer Ken Smith and the Great Park Design Studio – the architects, artists and engineers charged with designing the first great metropolitan park of the 21st Century – all of those elements seemed to fall into place. That approval came after a year of public opinion surveys, community meetings, a countywide stakeholder's conference and a two-week exhibition of the plan at Irvine City Hall, which included an innovative, floor-sized blueprint of the park showing the transformation from the sterile plateau of El Toro Marine Corps Air Station Base into a living landscape and active public space. When he presented his vision to the board Smith said: "In designing our park, we have taken the concept of health in its broadest sense – personal, regional and global – and applied it to everything we see and do. Individual and family health comes in the form of fresh air, recreation and a connection with nature... the atmosphere encourages interaction. The transportation systems, plant selection, signage, buildings, events at the amphitheater, food, and every detail of the park will reinforce this message of improving health within and beyond oneself."

The plan had been committed to a sustainable ecological and biological approach since even before the design team was in place. The Wildlife Corridor, The Irvine Ranch Water District Recycled Water System and some of the regional transportation initiatives have been focused on

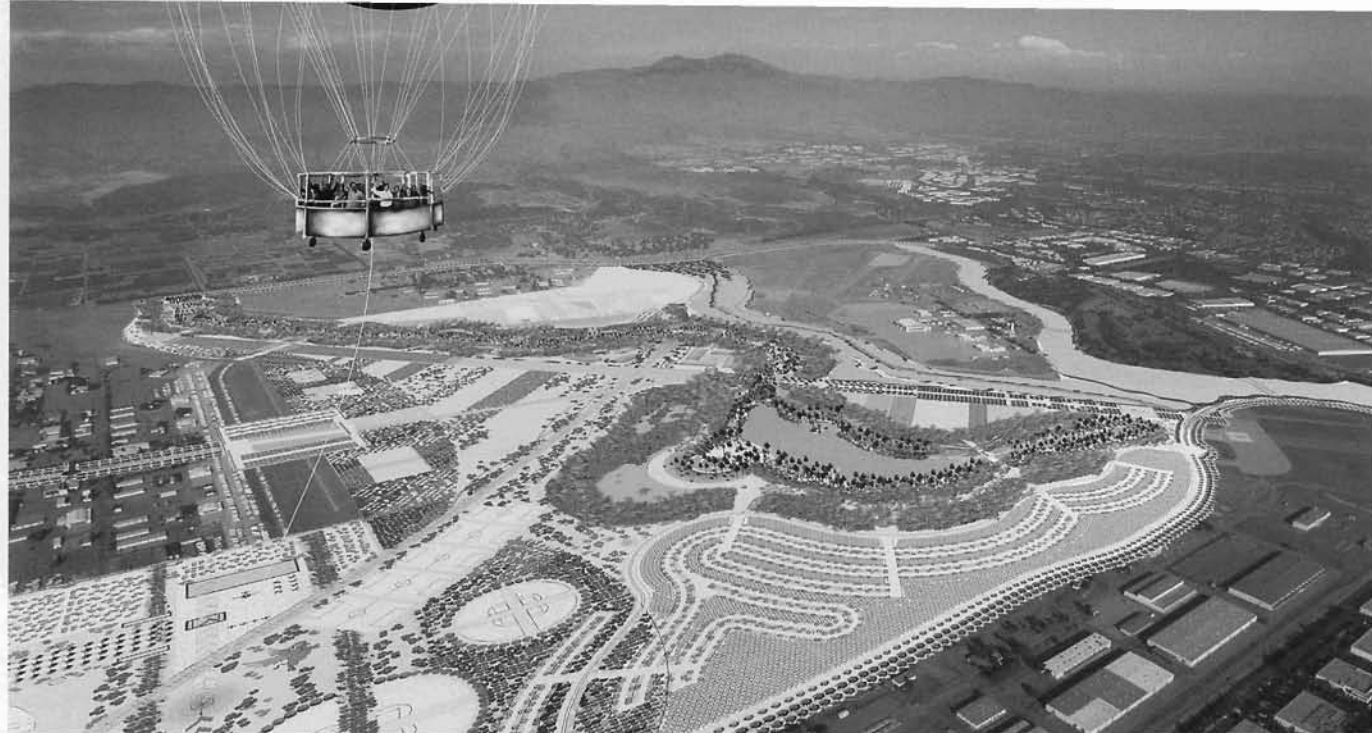
the park's lifespan. Great Park engineers are committed to an ecologically balanced plan that includes rainfall harvesting and groundwater recharge, non-polluting transportation, "green" streets, recycled water for lakes, creeks and irrigation, alternative on-site energy sources such as biomass and solar (one dozen 30-foot diameter, dish-shaped mirrors that focus sunlight onto a point and generate steam electricity), and underground 21st Century utilities including fiber optic and conduit for interactive metering.

There will be rain gardens. Hot air balloons for visitors to view the entire park, which at 1,347 acres, is more than twice the size of New York's Central Park. A Great Canyon. Biomass crops used for anaerobic digestion will generate electricity and heat. Telemetric irrigation, a wireless interactive communication technology, will be used to ensure that the least amount of energy and maximum conservation of resources is achieved. And perhaps most importantly, Orange County's agricultural heritage will be preserved and the military history of the former air base will be honored.

Which is why we are proud to be a media sponsor of the upcoming Jewel of Orange County, the Great Park Conservancy's main fundraising event, which takes place May 18 on the runway of the former base (see story on page 108). This and the Philharmonic House of Design (whose program is upside down and attached to this issue of *Coast*) are two community events that we, as sponsors, greatly encourage the community to attend. Great events, indeed. ◊



Justine Amodeo
Editor-in-Chief



GREAT EXP

With the county's most highly anticipated public space moving from renderings to reality, it's time for a closer look at its inspiring design

BY TERENCE LOOSE

Lead designer Ken Smith has said he was not interested in the “wow” factor when designing the Orange County Great Park. What was most important to him and his team was to represent Orange County’s rich past and speak to its bright future, all the while building a place that will serve the community for generations to come. “This has to be a great park,” he says. “Once we settle for a good park, we’re lost.” It’s a tall order he placed on himself, but as the opening of the park grows near, most think that Smith pulled it off – including the wow factor.

The Big Orange Balloon was one element of Ken Smith’s design that distinguished it and intrigued judges. As envisioned, three hot air balloons will serve as attractions for visitors while providing a bird’s eye view of the Great Park. The first balloon should be launching this summer.



Irvine is known for one thing above all else: it’s a family-friendly town. The Great Park will incorporate Pocket Parks where mom and dad can kick it while the little ones enjoy a small part of the biggest park built this century.



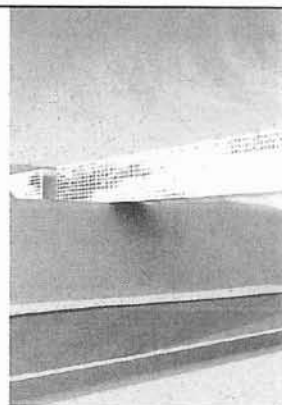
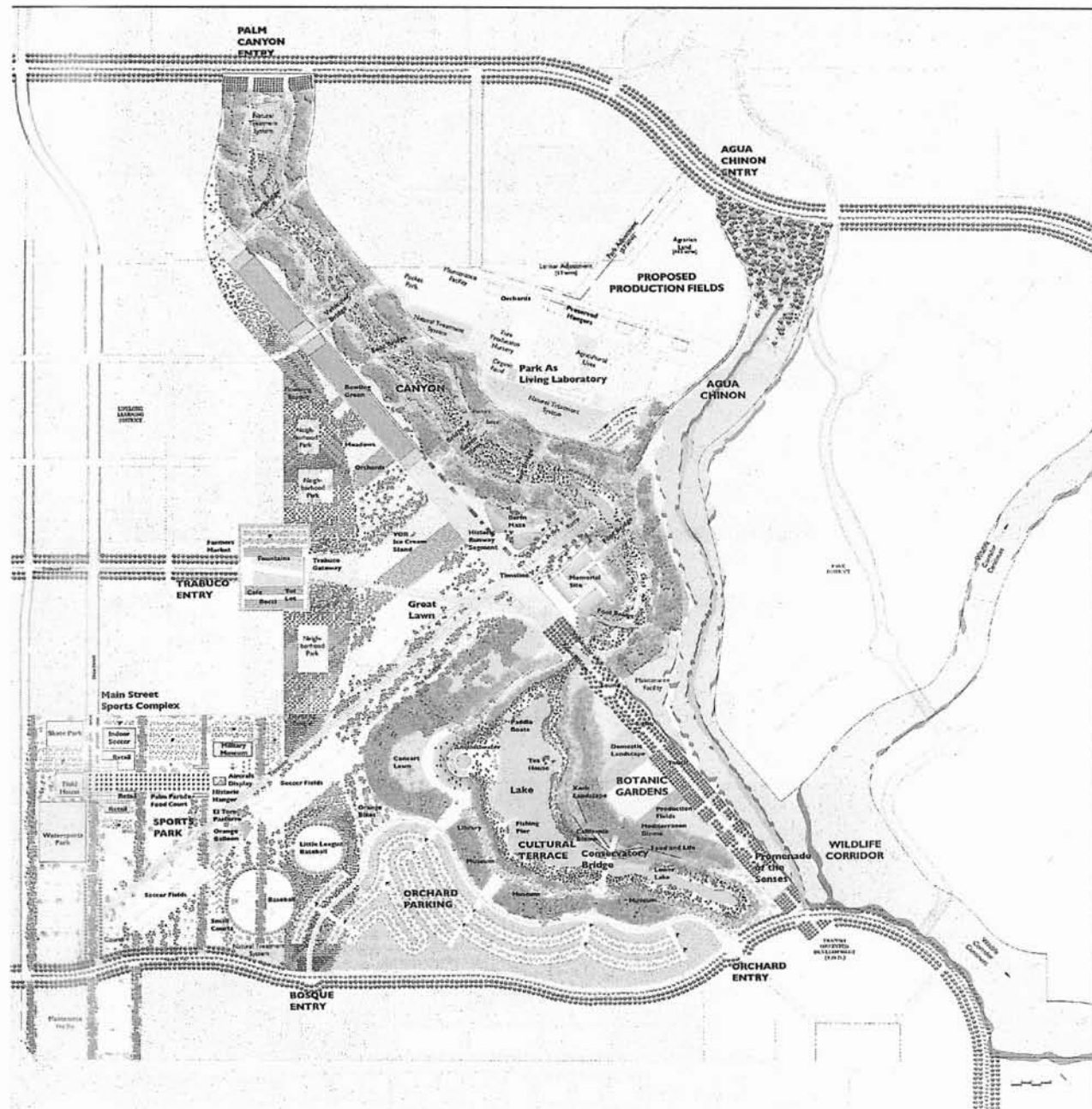
ECTATIONS

Measuring in at two miles long and up to 60-feet deep, and featuring a perennial stream connecting a string of small pools and a lake, the Great Canyon is the park's most distinctive element. Heavily planted, the canyon will be dramatically cooler than the nearby urban areas and an oasis where visitors can stroll along paths and trails bordered by native palms, woodlands and Mediterranean ornamentals.

Traversing the Great Canyon will be a series of Canyon Bridges. The most dramatic of these will be the "Bridge of Two Towers," which will zigzag across one of the widest parts of the canyon.



The Cultural Terrace is a 100-foot-wide jacaranda tree-lined urban terrace that will link major cultural features such as a café, library or museum, and a 10,000-seat amphitheater with lake and canyon views.



The Trabuco Entry to the park will feature two huge reflecting pools, fountains, flowering trees, expansive vistas, and a place to grab a quick bite. A monumental gateway structure will "frame" the landscape.

THE GREAT PARK BY THE NUMBERS

1,347

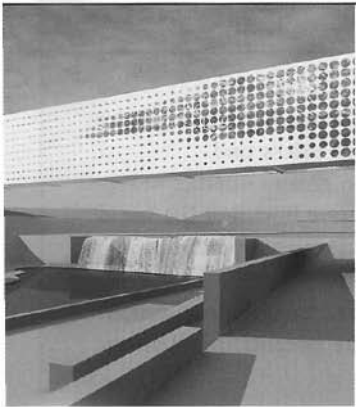
Acreage of the Great Park. This is more than twice the size of New York's Central Park.

3

Number of years it will take to fully remove the 50,000 feet (3.3 million tons) of three-foot thick runways and taxiways of the former military base. The project started May 12, 2006 and much of the runway material will be reused onsite.

2009

The projected opening date of the Great Park's first phase, which begins construction in late 2008.



In the Botanic Garden, visitors will be able to get up close and personal with Southern California native plants while learning about the relationship between people and plants, food and health, and society and setting in dynamic displays. A "garden bridge" will link the garden to the Cultural Terrace.

A NIGHT TO SHINE

The Great Park's mission is hefty, yet admirable. Sustainability, which is being measured by the increasingly fine balance between technology, nature and humankind, is the goal – and like most things worth the trouble, it's a pricey one.

On May 18, the second annual **JEWEL OF ORANGE COUNTY FUNDRAISER** hopes to attract an even greater number of supporters than the inaugural event held last year. Set to take place in a tented pavilion on the site of the future Botanical Garden at the Orange County Great Park, guests will participate in what is destined to become one of the world's greatest metropolitan parks.

And there are perks for the do-gooders: a hosted vodka bar, silent auction of exclusive jewelry and accessories from Cartier and Bvlgari, and a delicious alfresco dinner with live entertainment from circus fantasy group Cirque Dreams are all on the agenda. To conclude, American singing legend Kenny Loggins will perform.

Log on to www.OrangeCountyGreatPark.org for more information. –JESSICA FORSYTH



No park is great without a sporting element, and the Great Park will have one to suit its size: 165 acres of not only the requisite soccer fields and baseball diamonds, but also a skateboard complex, rock climbing wall and field house. An adjoining Great Lawn will entice picnickers, sunbathers and Frisbee throwers, as well as play host to large public events. It will be lined with groves of citrus and acacia trees as a reminder of Orange County's rich agricultural history.



The 50-plus-year history of Marine Corps Air Station El Toro's service as a military base will be remembered at the Great Park Air Museum. Here, vintage aircraft will be displayed on remnants of the former air base's runways and a timeline of historic events will join a veterans memorial honoring those who served.

3,380

Number of people countywide who participated in an online poll regarding features that should be incorporated into the Great Park.

10

The number of winners in the October, 14, 2006, Great Park Master Design Exhibition Opening drawing to be among the first to ride the Big Orange Balloon.

3

The length in miles of the wildlife corridor along the eastern border of the Great Park, which will provide a safe space for wildlife to migrate throughout the park. It is being called the "missing link" between the Cleveland National Forest to the north and Crystal Cove State Park to the south.